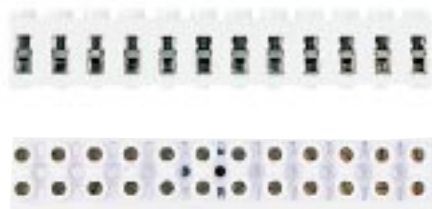
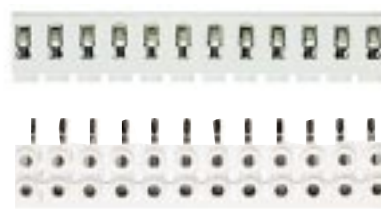


# Direct mounting Multi-pole and modular blocks

**EKS 12/4**  
500V 32A



**EKST 12/4**  
250V 20A



The following connection methods are featured in this range of terminals.

- Screw Clamp/Screw Clamp
- Screw Clamp/Solder tab
- Screw Clamp/Wire Wrap
- Screw Clamp/Termipoint

The various terminals listed in this section are manufactured from the following materials –  
High grade Melamine  
Polyamide 6.6  
High grade PVC  
High density Polyethylene  
each range having certain individual characteristics.

Mounting the AKB terminals Block BB 1 at each end.

ASK 1 is for 5 x 20mm fuses, but can be fitted with a solid brass link for use as a neutral disconnect terminal.

Four use as 'Plug-in' to EKS 12/4

0.5-4
0.5-4
8
High grade PVC 70 °C

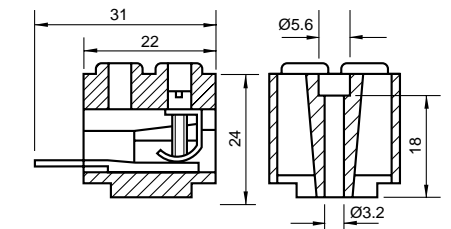
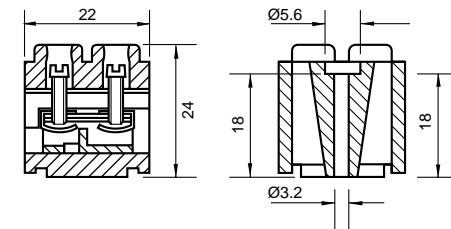
0.5-4
0.5-4
8
High grade PVC 70 °C

Type		Cat No.
EKS 2/4	2 way	062450
EKS 3/4	3 way	062440
EKS 4/4	4 way	062430
EKS 6/4	6 way	062410
EKS 8/4	8 way	062390
EKS 10/4	10 way	062370
EKS 12/4	12 way	062350

Type		Cat No.
EKST 2/4	2 way	062890
EKST 3/4	3 way	062880
EKST 4/4	4 way	062870
EKST 6/4	6 way	062850
EKST 8/4	8 way	062830
EKST 10/4	10 way	062810
EKST 12/4	12 way	062790

Other ways up to 12 available on request.  
Distance between fixing hole 10.7mm centre to centre

Other ways up to 12 available on request.  
Distance between fixing hole 10.7mm centre to centre



Type		Cat No.
BSTo 28/12/10-7		019500
	above	below
BSTb 28/12/10-7 (1-12)	027840	019510
PEN		058040

Type		Cat No.
BSTo 28/12/10-7		019500
	above	below
BSTb 28/12/10-7 (1-12)	027840	019510
PEN		058040

Additional accessories please see relevant Catalogue Section