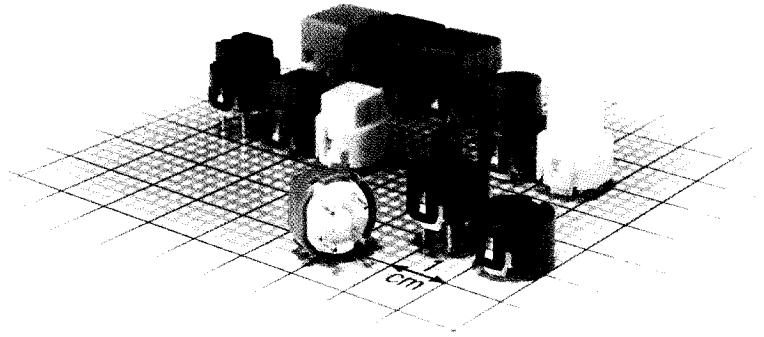


D6 Key Switch



The D6 is a single-pole, momentary action, normally open keyswitch specially designed for digital electronic controls. Its small size enables keyboard design with minimum center spacing of 12.7 mm [.500 inch].

The commoned terminals offer the possibility of X, Y coding on just a single sided printed circuit board.

A total travel of 0.8 mm [.0315 inch] combined with a snap effect provides the user with a smooth, gentle, yet positive tactile feedback.

Built-in buttons (square or round) are available in several colors and have been designed to fit directly on front panels.

The D6 version with plunger 3.3 × 3.3 mm [.130 × .130 inch] can accept any standard or customer-designed button.

Flat D6 can be actuated with customer designed buttons or behind a membrane.

A version exists for high temperature, resisting wave soldering in severe conditions. This type is offered only in black.

Applications

- Video, TV sets, remote control, video and disc recorder
- Audio, car radio, portable radio
- Test and measuring equipment
- Automobiles
- Electronic games
- Domestic appliances
- Telephones and intercoms

Construction

Function	Momentary
Contact arrangement	1 make contact = SPST, NO
Distance between button centers, min.	12.7 mm [.500 inch]
Contacts	PC pins

Electrical data

Switching power max.	6 VA
Switching voltage max.	100 V AC
Switching current max.	100 mA AC
Dielectric strength (50 Hz/1 Min.)	1000 V AC
Operating life with max. switching power	≧ 2.5 × 10 ⁵ operations
Contact resistance	≧ 100 mΩ
Insulation resistance	≧ 10 ¹¹ Ω
Contact bounce	≧ 3 ms

Mechanical data

Switching travel	0.8 mm ± 0.2 mm [.0315 inch ± .00787 inch]
Operating force	1.3N ± 30% [130 grams ± 30%]

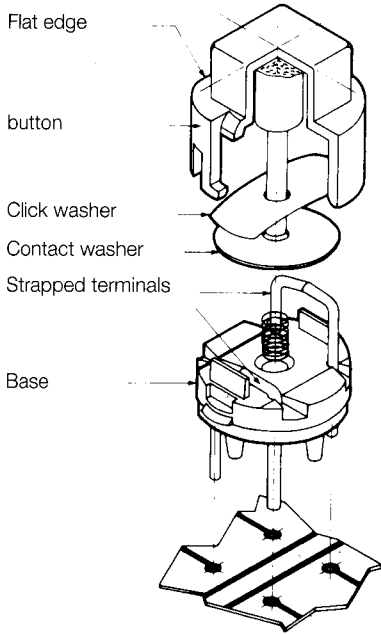
Further data

Contact material	Silver plated	
Insulation material	base	PBT (white color) PBT for high temperature (blue color)
	button	ABS high temperature
Operating temperature	- 20°C to + 85°C	
Climatic category	21 days at 40°C	
Hand soldering	350°C for 3 seconds	
Wave or bath soldering	225°C for 5 seconds	
Cleaning	Use solvents compatible with ABS.	

Ordering code: see next page.

Dimensional Drawings · Dimensions in mm [inch]

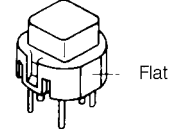
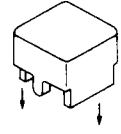
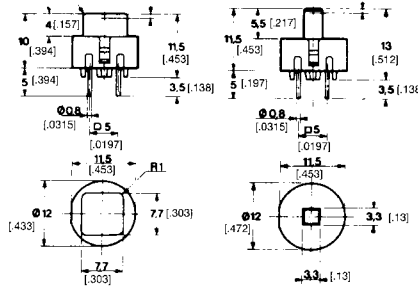
D6



D6C
square

D6L with plunger
3 × 3 mm

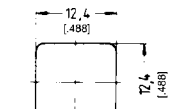
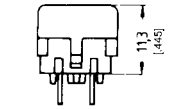
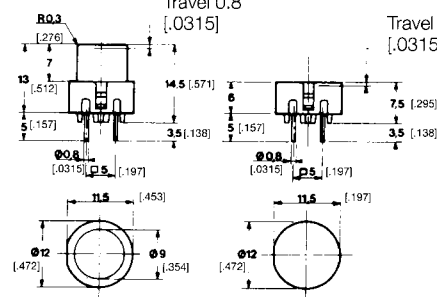
Snap-on button



D6R
round button

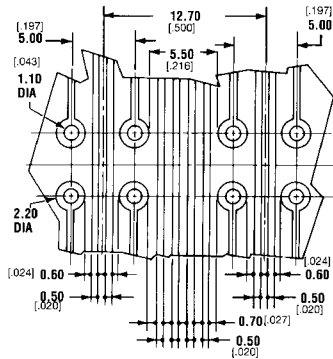
D6F
flat button

Travel 0.8 [0315]

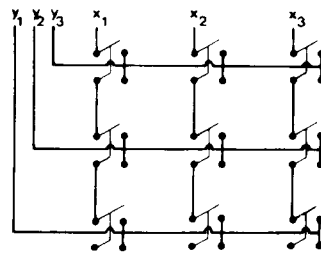


Snap-on button

PCB layout · Dimensions in mm [inch]



PCB layout example showing D6 at minimum center spacing of 12.7 mm [0.5 inch]



Schematic of an X, Y coding using strapped terminals and a single sided PCB

Ordering code

1	Designation: D6
2	Switch style: C = square, R = round, F ¹ = flat, L ¹ = square 3.3 mm [0.130 inch]
3	Switch color: 00 = white, 10 = grey, 30 = yellow, 40 = red, 50 = green, 60 = blue, 80 = ivory, 90 = black

Example:

	1	2	3
	D6	R	30

¹) Note: Switch styles F and L only available in black.

Ordering code for D6 button: Snap-on buttons for switch style C (square, supplied in bulk)

1	Button: BTN
2	Type: D6
3	Button color: 00 = white, 10 = grey, 30 = yellow, 40 = red, 50 = green, 60 = blue, 80 = ivory, 90 = black

Example:

	1	2	3
	BTN	D6	30