

IEC inlet filters FN 9222

General performance IEC inlet filter



- Rated currents up to 20A
- Excellent performance/size ratio
- Optional medical versions (B type)
- Snap-in versions (S and S1 type)
- Hot inlet versions (HI type)

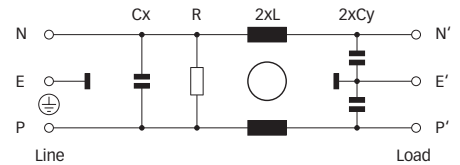
Approvals



Technical specifications

Maximum continuous operating voltage:	250VAC, 50/60Hz
Operating frequency:	dc to 400Hz
Rated currents:	1 to 20A @ 50°C
Approvals by rated current:	
1 to 10A types:	1 to 10A (ENEC, UL, CSA, CQC)
12 and 15A types:	10A (ENEC), 12 to 15A (UL, CSA, CQC)
16 and 20A types:	16A (ENEC), 16 to 20A (UL, CSA)
High potential test voltage:	P → E 2000VAC for 2 sec (standard types) P → E 2500VAC for 2 sec (B types) P → N 1000VAC for 2 sec (1 to 10A types) P → N 1100VDC for 2 sec (16 and 20A types)
Protection category:	IP40 according to IEC 60529
Temperature range (operation and storage):	-25°C to +85°C (25/85/21)
Design corresponding to:	UL 1283, CSA 22.2 No. 8 1986, EN 60939
Flammability corresponding to:	UL 94V-2 or better
MTBF @ 40°C/230V (Mil-HB-217F):	≤15A: 3,040,000 hours ≥16A: 2,256,000 hours

Typical electrical schematic



The FN 9222 IEC inlet filter combines an IEC inlet and mains filter with excellent filter attenuation in a small form factor. Choosing the FN 9222 product line brings you the rapid availability of a standard filter associated with the necessary safety acceptances. Standard IEC connector filters are a practical solution helping you to pass EMI system approval in a short time. A wide selection on amperage ratings, output connections, mounting possibilities and filters for medical applications are designed to offer you the desired solution.

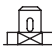

Features and benefits

- Exceptional conducted attenuation performance, based on chokes with high saturation resistance and excellent thermal behavior.
- Rear/front or snap-in mounting.
- Optional low leakage currents for medical applications.
- 12 and 15A types with hot inlet available.
- Different output connections offering maximum flexibility for assembly.
- Custom-specific versions are available on request.

Typical applications

- Portable electrical and electronic equipment
- Small to medium sized machines and household equipment
- Single-phase power supplies, switch mode power supplies
- Test and measurement equipment
- Medical systems
- Rack mounting equipment

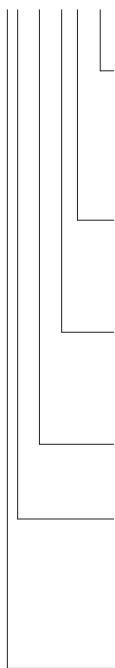
Filter selection table

Filter	Rated current @ 50°C (25°C)	Leakage current* @ 250VAC/50Hz	Inductance L	Capacitance Cx Cy		Resistance R	Output connections		Weight
	[A]	[µA]	[mH]	[µF]	[nF]	[kΩ]	 	[g]	
FN 9222x-1-..	1 (1.2)	373	12	0.1	2.2		-06 -07	40	
FN 9222x-3-..	3 (3.5)	373	2.5	0.1	2.2		-06 -07	40	
FN 9222x-6-..	6 (7.2)	373	0.78	0.1	2.2		-06 -07	40	
FN 9222x-8-..	8 (10.6)	373	0.4	0.1	2.2		-06 -07	40	
FN 9222x-10-..	10 (11.6)	373	0.225	0.1	2.2		-06 -07	40	
FN 9222x-12-..	12 (12)	373	0.11	0.1	2.2		-06 -07	40	
FN 9222x-15-..	15 (15)	373	0.075	0.1	2.2		-06 -07	40	
FN 9222x-12-..HI	12 (12)	373	0.11	0.1	2.2		-06 -07	40	
FN 9222x-15-..HI	15 (15)	373	0.075	0.1	2.2		-06 -07	40	
FN 9222xR-1-..	1 (1.2)	373	12	0.1	2.2	1000	-06 -07	40	
FN 9222xR-3-..	3 (3.5)	373	2.5	0.1	2.2	1000	-06 -07	40	
FN 9222xR-6-..	6 (7.2)	373	0.78	0.1	2.2	1000	-06 -07	40	
FN 9222xR-8-..	8 (10.6)	373	0.4	0.1	2.2	1000	-06 -07	40	
FN 9222xR-10-..	10 (11.6)	373	0.225	0.1	2.2	1000	-06 -07	40	
FN 9222xR-12-..	12 (12)	373	0.11	0.1	2.2	1000	-06 -07	40	
FN 9222xR-15-..	15 (15)	373	0.075	0.1	2.2	1000	-06 -07	40	
FN 9222xR-16-..	16 (18.5)	373	0.54	0.33	2.2	1000	-06	100	
FN 9222xR-20-..	20 (23)	373	0.4	0.33	2.2	1000	-06	100	
FN 9222xR-12-..HI	12 (12)	373	0.11	0.1	2.2	1000	-06 -07	40	
FN 9222xR-15-..HI	15 (15)	373	0.075	0.1	2.2	1000	-06 -07	40	
FN 9222xB-1-..	1 (1.2)	2	12	0.1		1000	-06 -07	40	
FN 9222xB-3-..	3 (3.5)	2	2.5	0.1		1000	-06 -07	40	
FN 9222xB-6-..	6 (7.2)	2	0.78	0.1		1000	-06 -07	40	
FN 9222xB-8-..	8 (10.6)	2	0.4	0.1		1000	-06 -07	40	
FN 9222xB-10-..	10 (11.6)	2	0.225	0.1		1000	-06 -07	40	
FN 9222xB-12-..	12 (12)	2	0.11	0.1		1000	-06 -07	40	
FN 9222xB-15-..	15 (15)	2	0.075	0.1		1000	-06 -07	40	
FN 9222xB-16-..	16 (18.5)	2	0.54	0.33		1000	-06	100	
FN 9222xB-20-..	20 (23)	2	0.4	0.33		1000	-06	100	
FN 9222xB-12-..HI	12 (12)	2	0.11	0.1		1000	-06 -07	40	
FN 9222xB-15-..HI	15 (15)	2	0.075	0.1		1000	-06 -07	40	

* Max. leakage under normal operating conditions. Note: if the neutral line is interrupted, worst case leakage could reach twice this level.

Product selector

FN 9222xx-yy-..HI-zz



Snap-in range for S version only

Blank: Snap-in range 0.7 to 1.5mm

20: Snap-in range 1.5 to 2.2mm

Blank: Standard IEC inlet type C14 (1 to 15A types), C16 (16 and 20A types)

HI: Hot IEC inlet type C16 (12 and 15A types only)

06: Faston 6.3 x 0.8mm (spade/soldering)

07: Wire leads

1 to 20: Rated current


Blank: Standard version

R: Bleed resistor

B: Medical version (with bleed resistor and without Y2-capacitor)

 Blank: Standard housing with mounting flanges

 S: Snap-in version, snapper on vertical side (1 to 15A types only)

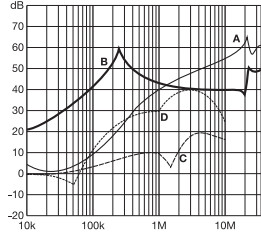
 S1: Snap-in version, snapper on horizontal side (1 to 15A types only)

For example: FN 9222-15-07, FN 9222S1B-10-06-20, FN 9222R-12-06HI-20

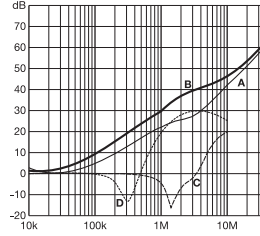
Typical filter attenuation

Per CISPR 17; A = 50Ω/50Ω sym; B = 50Ω/50Ω asym; C = 0.1Ω/100Ω sym; D = 100Ω/0.1Ω sym

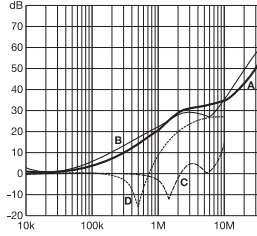
1 and 3A types



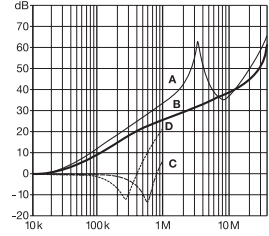
6 to 10A types



12 and 15A types

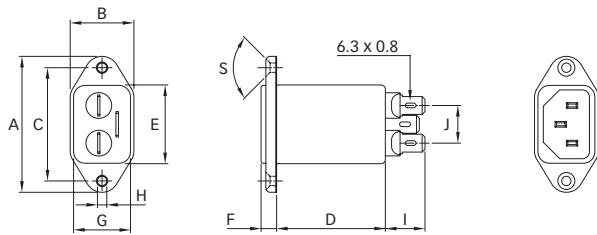


16 and 20A types

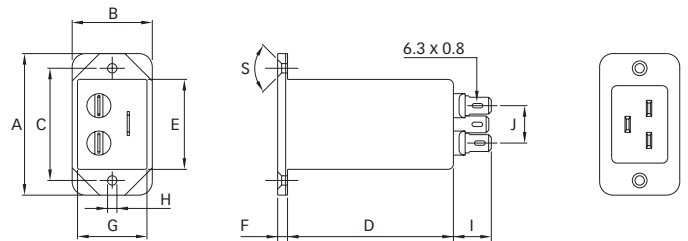


Mechanical data

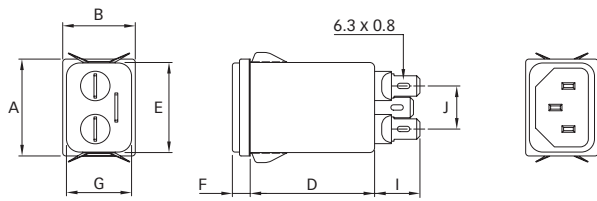
FN 9222, 1 to 15A types



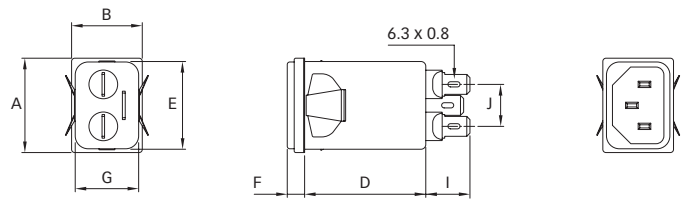
FN 9222, 16 and 20A types



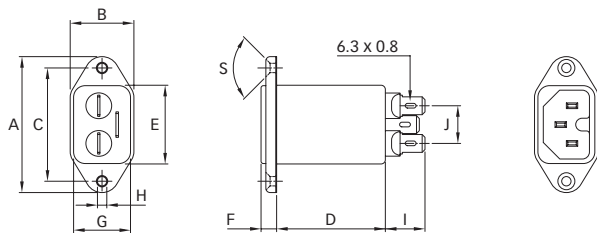
FN 9222S



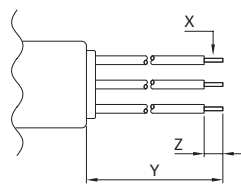
FN 9222S1



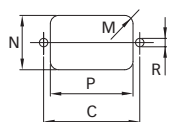
FN 9222-HI



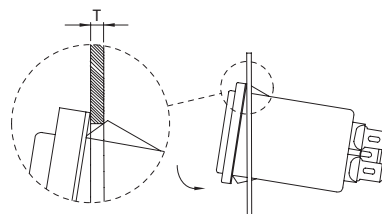
-07 connection style



Panel cut out



Installation



Dimensions

	FN 9222 1 to 8A	10 to 15A	16 and 20A	FN 9222S 1 to 8A	10 to 15A	FN 9222S1 1 to 8A	10 to 15A	FN 9222-HI 12 and 15A
A	48	48	53	29.9	29.9	29.9	29.9	48
B	22.5	22.5	30	22.4	22.4	22.4	22.4	22.5
C	40	40	42					40
D	38.4	38.4	66	38.4	38.4	38.4	38.4	38.4
E	27.8	27.8	34	27.8	27.8	27.8	27.8	27.8
F	5.5	5.5	4	5.5	5.5	5.5	5.5	5.5
G	20.1	20.1	26.5	20.1	20.1	20.1	20.1	20.1
H	Ø3.3	Ø3.3	Ø3.5					Ø3.3
I	14	14	14	14	14	14	14	14
J	13.3	13.3	13.3	13.3	13.3	13.3	13.3	13.3
M	R ≤ 3	R ≤ 3	R ≤ 3	R ≤ 1.5	R ≤ 1.5	R ≤ 1.5	R ≤ 1.5	R ≤ 3
N	21.5	21.5	27	20.8	20.8	21.9	21.9	21.5
P	28.5	28.5	34.7	29.4	29.4	28.5	28.5	28.5
R	M3	M3	M3					M3
S	90°	90°	90°					90°
T*				0.7 - 1.5	0.7 - 1.5	0.7 - 1.5	0.7 - 1.5	
T*				1.5 - 2.2	1.5 - 2.2	1.5 - 2.2	1.5 - 2.2	
X	AWG 18	AWG 16		AWG 18	AWG 16	AWG 18	AWG 16	AWG 16
Y	160	160		160	160	160	160	160
Z	6	6		6	6	6	6	6

* For selecting the panel thickness, please refer to the filter selection table.

All dimensions in mm; 1 inch = 25.4mm

Tolerances according: ISO 2768 / EN 22768