

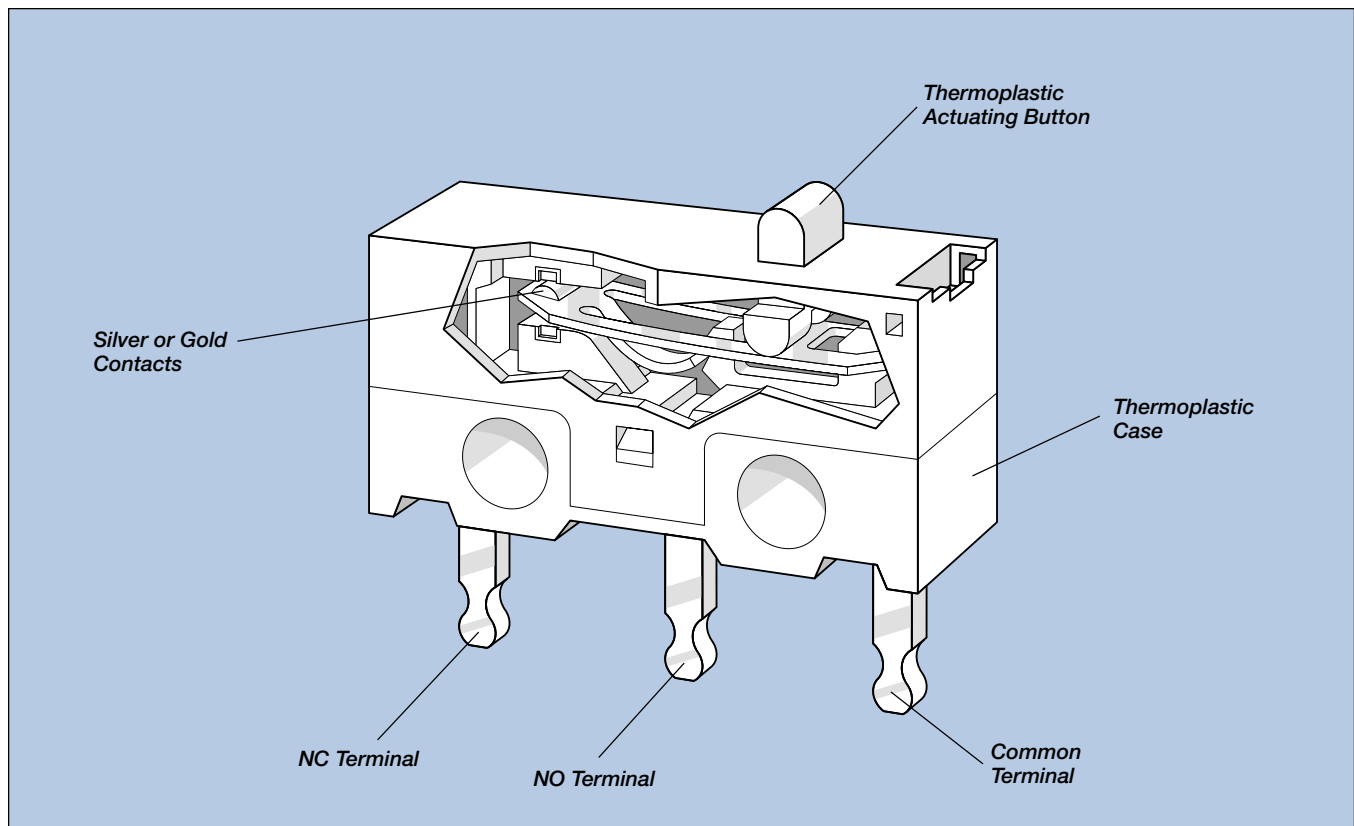
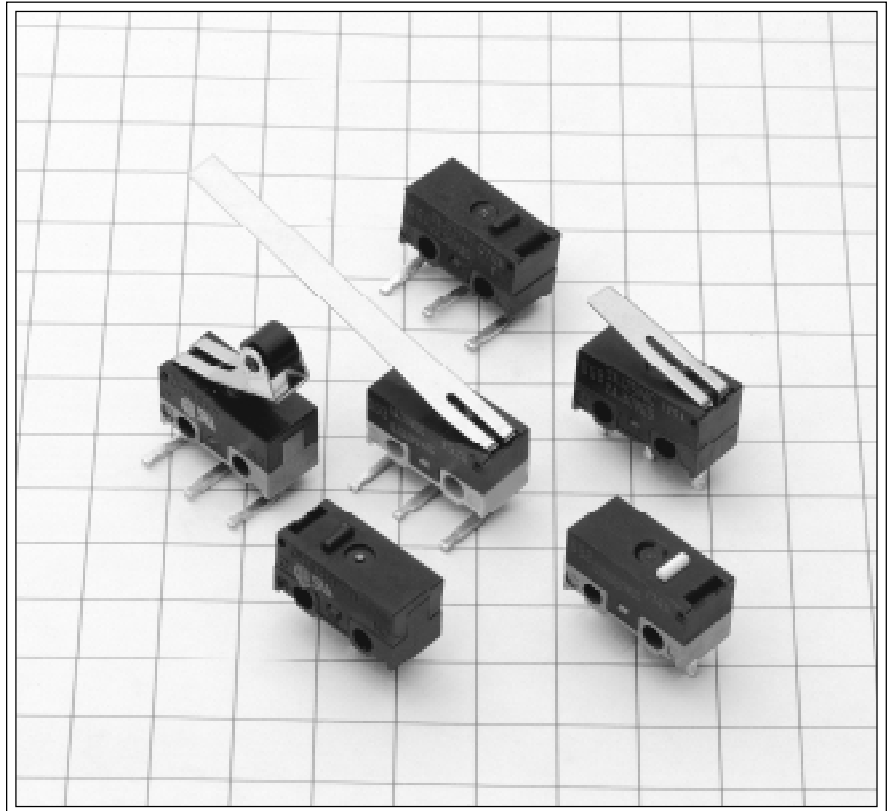
DG Series

Sub-Subminiature

- DG1** 3 amp 125 VAC
2 amp 30 VDC
- DG2** 50 mA 30 VDC
- DG3** 0.5 amp 125 VAC
1 amp 30VDC
- DG4** 1 amp 125 VAC
1 amp 30 VDC

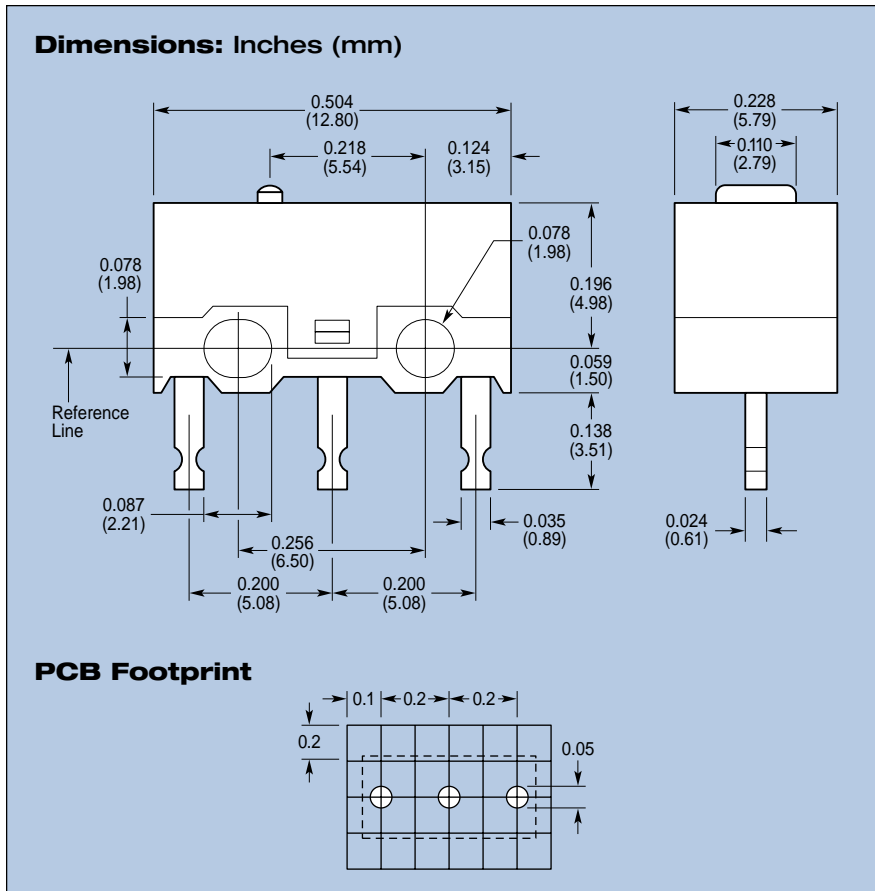
Features

- Compact size:
0.504"L x 0.228"W x 0.255"H
- Insertion molded terminals;
printed circuit mountable
- Automatic assembly insures
consistent quality
- UL94V-0



DG Series

Sub-Subminiature



Contacts and Ratings

Series Prefix	Rating
DG1	3 amp 125 VAC 2 amp 30 VDC
DG2	50 mA 30 VDC
DG3	0.5 amp 125 VAC 1 amp 30 VDC
DG4	1 amp 125 VAC 1 amp 30 VDC
Temperature Rating	-25° to +65°C
Flammability Rating	UL94V-O

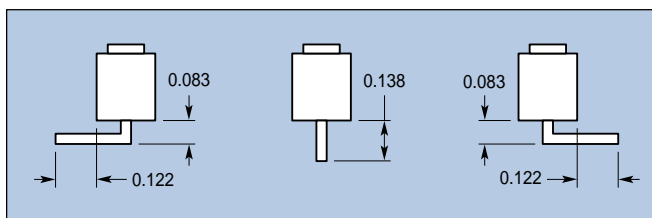
Electrical Specifications/Life

Mechanical Life	3 x 10 ⁵ cycles
Electrical Life	1 x 10 ⁴ cycles

Materials

Contacts	Gold Plated (DG2 only) or Silver Alloy
Terminals	Silver Plated Brass
Blade	Beryllium Copper
Actuator	Stainless Steel
Base	Thermoplastic Polyester
Cover	Thermoplastic Nylon 66
Button	Thermoplastic Polyester

Terminals



Operating Characteristics

Operating Force	140 gms. max.
Rest Position*	0.231 ref.
Pretravel	0.020 max.
Operating Position*	0.213 ±0.008
Movement Differential	0.004 max.
Overtravel	0.008 min.

* Measured above reference line. Refer to dimensional drawing above.

Ordering Information

DG **1** **C** **B** **1** **A**

Series/Prefix

C O D E	Base Color	Current Rating
1	Black	3 amp 125 VAC 2 amp 30 VDC
2	Green	50 mA 30 VDC
3	Deep Red	0.5 amp 125 VAC 1 amp 30 VDC
4	Brown	1 amp 125 VAC 1 amp 30 VDC

C O D E	Contact Configuration
C	D.T.

C O D E	Button Color	Operating Force
B'	Black	140g
C**	Natural	75g

* Not available for DG4
** For DG2 and DG4 only

C O D E	Terminal Configuration
1	
2	
3	

C O D E	Actuator	Actuator Length		
		A	B	C
AA	Button	—	—	—
L	Lever	.169	.500	1.012
R	Roller	.075	—	—

Actuator lengths are dimensioned from center line of switch mounting hole.

Reference Line Switch Mtg Hole