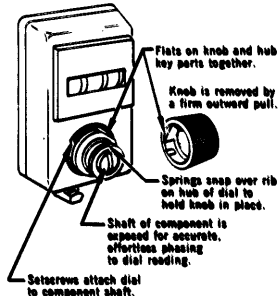
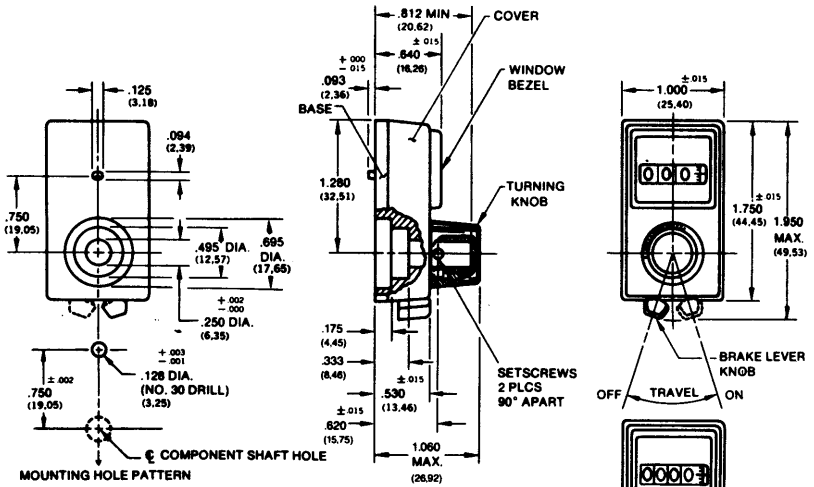


## HOW TO ORDER THE MODEL 15

Models can be ordered from this specification sheet by stating:

- 15 - X - XX**
- Basic Model \_\_\_\_\_
- Shaft Diameter and Numerical Display \_\_\_\_\_
1. 1/4 Dia. 3 Digit
  2. 1/4 Dia. 4 Digit
  3. 3/8 Dia. 3 Digit
  4. 3/8 Dia. 4 Digit
- Bezel \_\_\_\_\_
1. Open
  3. Clear Plastic Window
- Finish \_\_\_\_\_
1. Satin Clear Anodize
  3. Black Anodize, White Bezel Trim
  5. Black Anodize



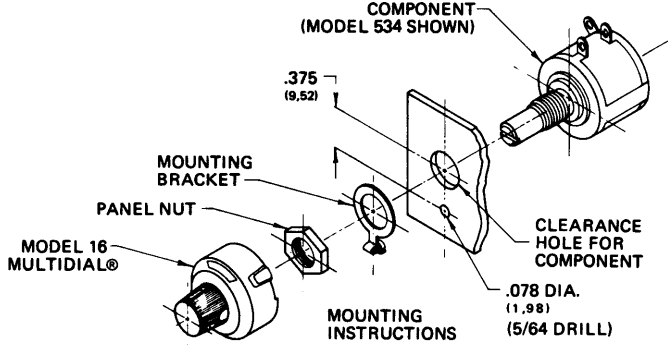
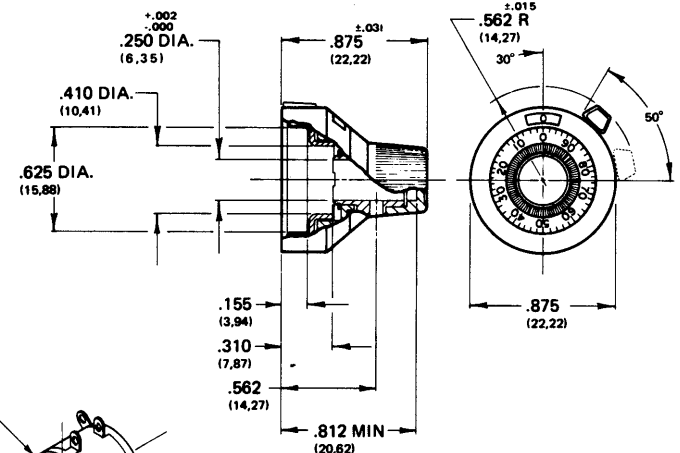
**MODEL 15**  
Removable knob exposes end of component shaft for precise phasing. Knob covers mounting set screws to give unit smooth, unblemished appearance.

TOLERANCES: UNLESS OTHERWISE NOTED, DECIMALS ± .005, ANGLES ± 2°  
BASIC DIMENSIONS ARE IN INCHES, MILLIMETER DIMENSIONS IN PARENTHESES.

## HOW TO ORDER THE MODEL 16

Models can be ordered from this specification sheet by stating:

- 16 - X - XX**
- Basic Model \_\_\_\_\_
- Shaft Accommodations \_\_\_\_\_
1. 1/4 Dia. Shaft — 1 Set Screw
  2. 1/4 Dia. Shaft — 2 Set Screws
  3. 3/8 Dia. Shaft — 1 Set Screw
  4. 3/8 Dia. Shaft — 2 Set Screws
  5. 0.093 Dia. Shaft — 1 Set Screw
- Finish \_\_\_\_\_
11. Standard
  21. Black Anodize



© Multidial is a Registered Trademark

TOLERANCES: UNLESS OTHERWISE NOTED, DECIMALS ± .005, ANGLES ± 2°  
BASIC DIMENSIONS ARE IN INCHES, MILLIMETER DIMENSIONS IN PARENTHESES



4051 Greystone Drive  
Ontario, California 91761  
(909) 923-3313 • FAX: (909) 923-6765