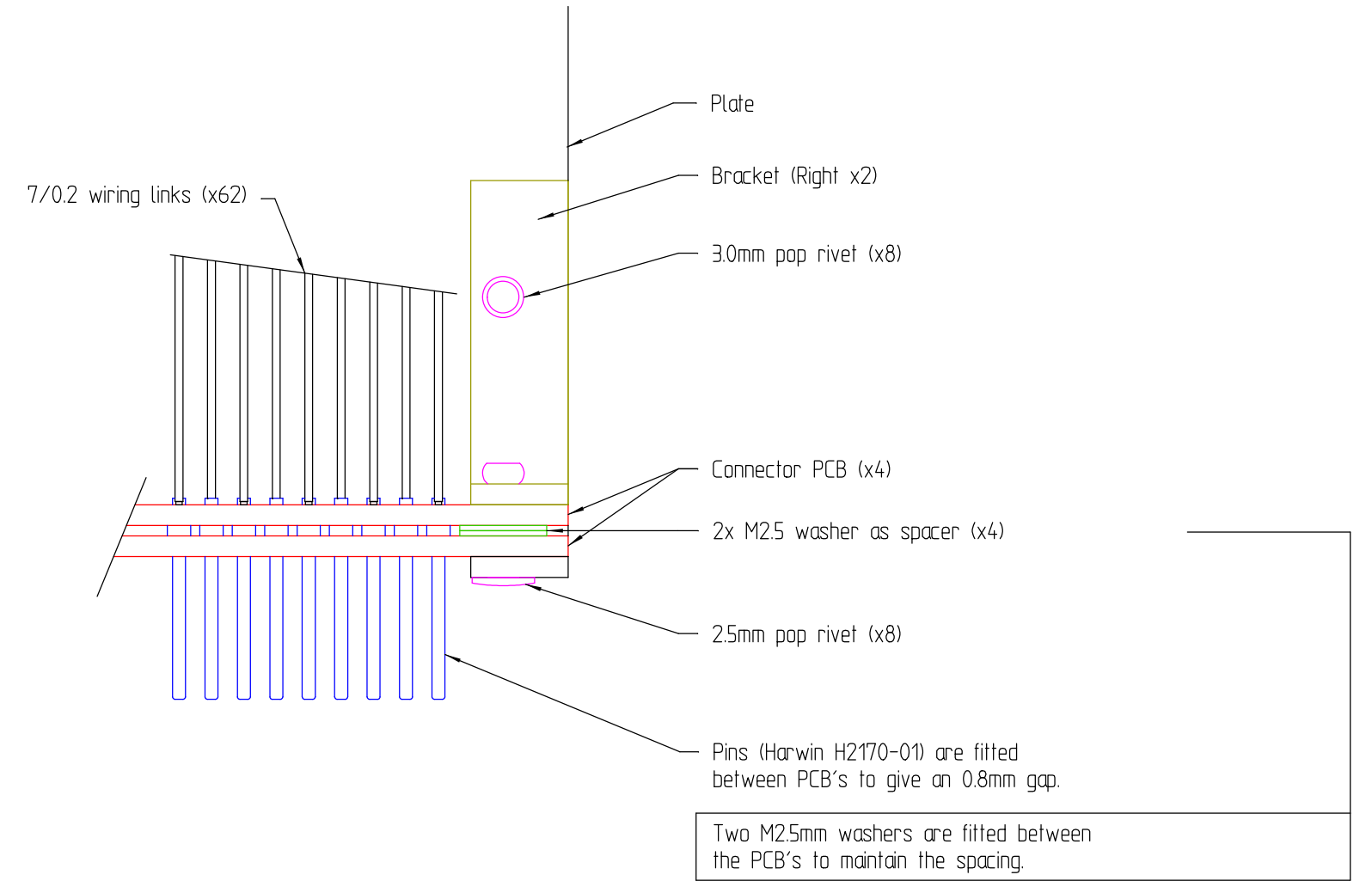
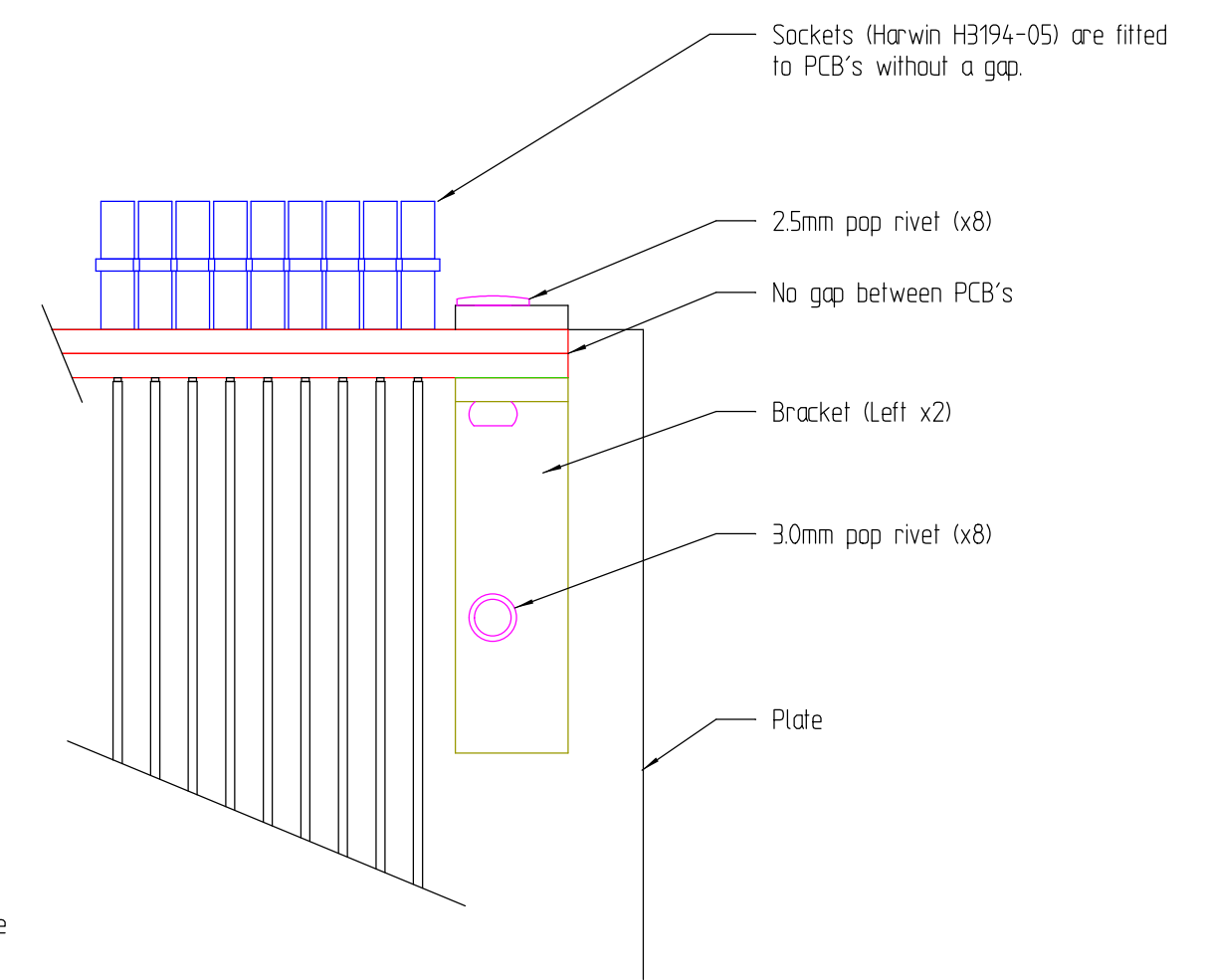
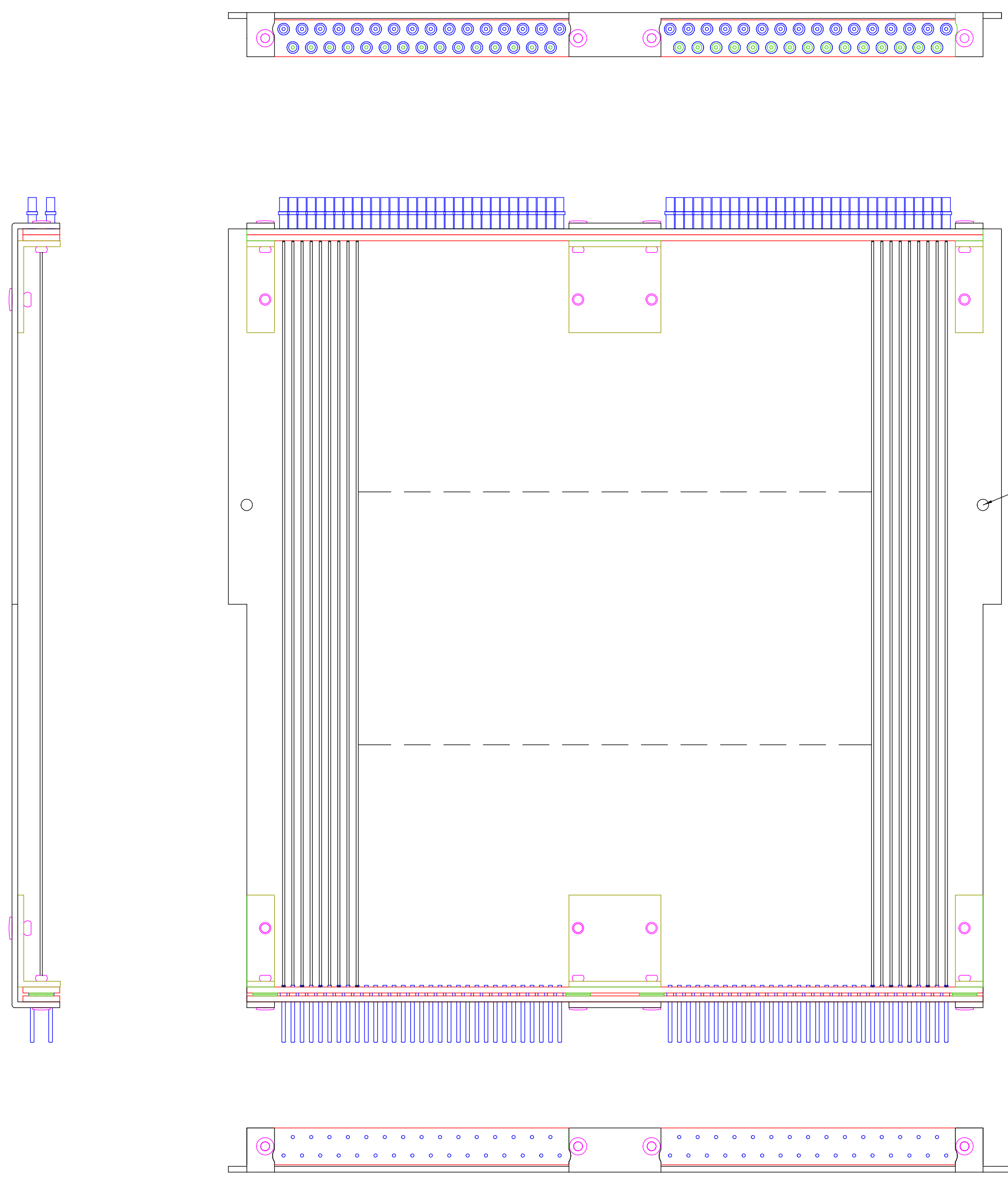


RevNo	Revision note	Date	By	Checked
-	-	-	-	-



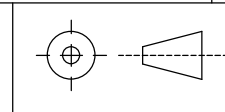
DM Associates
 33, Northbrook Road
 Aldershot, Hampshire. GU11 3HE UK
 Email - mike@soemtron.org
 www.soemtron.org

Material	Tolerances	0 Decimal Places	+/- 0.5
1.5mm Alu	Unless	1 Decimal Place	+/- 0.25
Finish	Otherwise	2 Decimal Places	+/- 0.10
Clean	Stated	Angles +/- 2 Deg.	

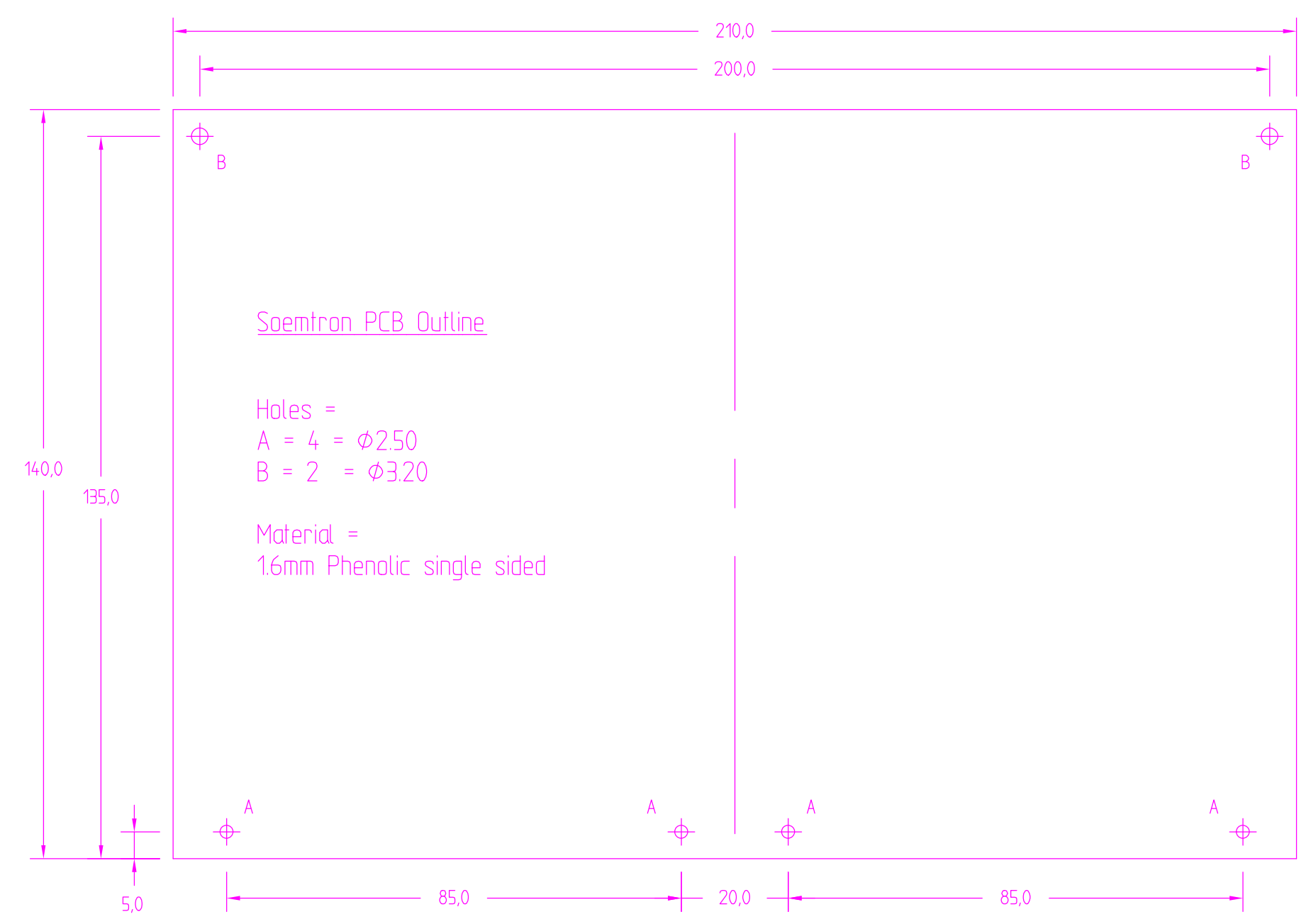
Dimensions in		to BS308, DO NOT SCALE	
Drawn	Name	Date	Scale
MD Hatch		16/1/2014	Sheet 3
Checked	-	-	Next sheet 4

Title		www.soemtron.org	
Extender Board		Extender Assembly	
Drawing Number		A2	Issue A

© 2014 Mike Hatch. (www.soemtron.org)



RevNo	Revision note	Date	By	Checked
-	-	-	-	-



DM Associates
 33, Northbrook Road
 Aldershot, Hampshire. GU11 3HE UK
 Email - mike@soemtron.org
 www.soemtron.org

Material	1.5mm Alu
Finish	Clean

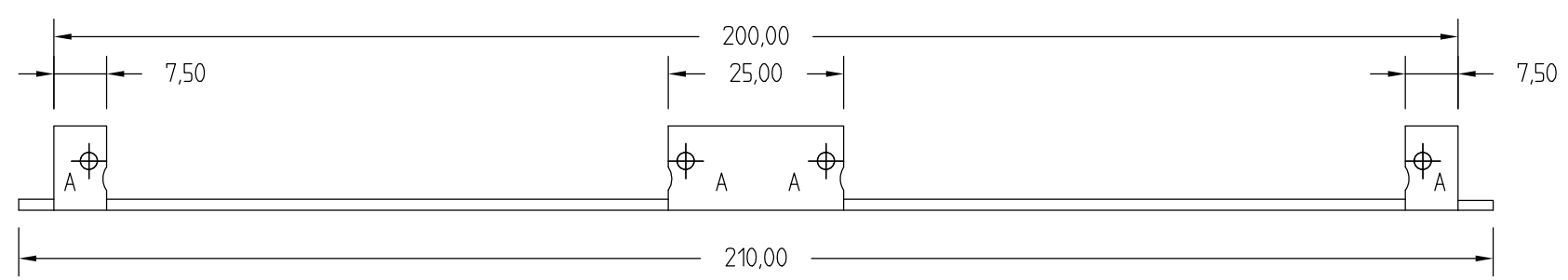
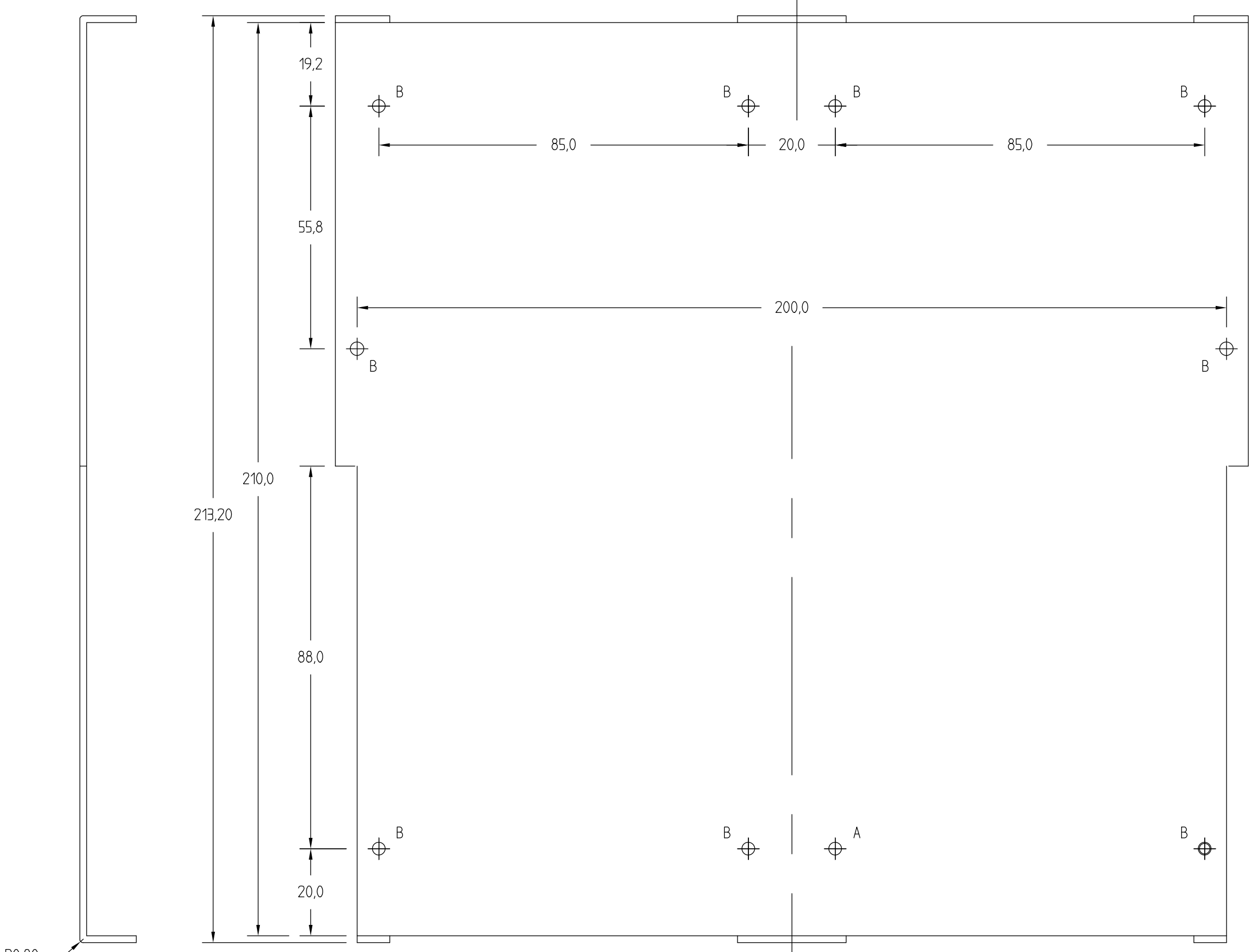
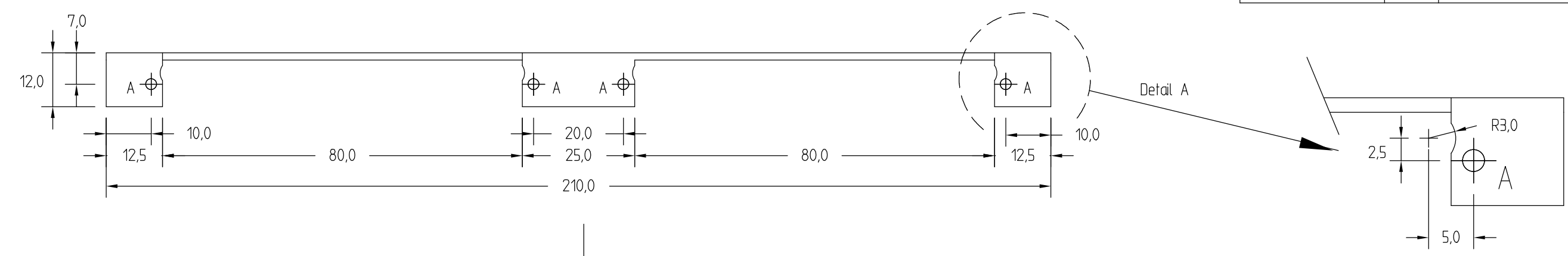
Tolerances	0 Decimal Places	+/- 0.5
Unless	1 Decimal Place	+/- 0.25
Otherwise	2 Decimal Places	+/- 0.10
Stated	Angles +/- 2 Deg.	

Dimensions in		to BS308, DO NOT SCALE	
Name	Date	Scale	Nts
Drawn	MD Hatch	16/1/2014	Sheet 4
Checked	-	-	Next sheet -
Drawing Number		A2 Issue A	

www.soemtron.org
 Extender Board
 Soemtron PCB Board Outline

© 2014 Mike Hatch. (www.soemtron.org)

RevNo	Revision note	Date	By	Checked
-	-	-	-	-



Extender Plate

- Holes =
- A = 8 = $\phi 2.50$
- B = 10 = $\phi 3.20$
- Material =
- 1.6mm Aluminium sheet
- Remove all burrs
- Detail A repeats 8 times

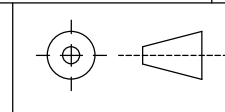


DM Associates
 33, Northbrook Road
 Aldershot, Hampshire. GU11 3HE UK
 Email - mike@soemtron.org
 www.soemtron.org

Material	Tolerances	0 Decimal Places	+/- 0.5
1.5mm Alu	Unless	1 Decimal Place	+/- 0.25
Finish	Otherwise	2 Decimal Places	+/- 0.10
Clean	Stated	Angles +/- 2 Deg.	

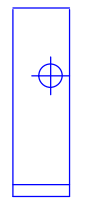
Dimensions in		to BS308, DO NOT SCALE		Scale	Nts	Title
Drawn	Name	Date	Sheet	Next sheet	Drawing Number	Extender
Checked	-	-	1	2		
	MD Hatch	16/1/2014				

www.soemtron.org		Extender Board		Extender Panel Mechanical	
Issue	A2	Issue	A		

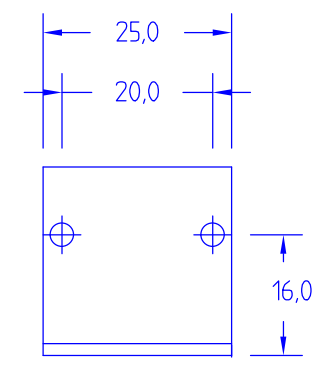


RevNo	Revision note	Date	By	Checked
-	-	-	-	-

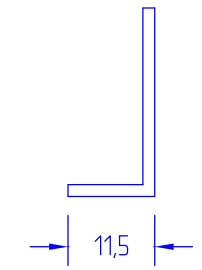
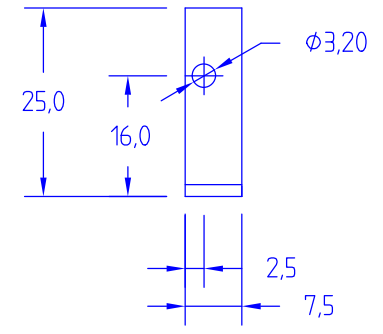
Edge brackets
x2 Left hand
(Mirrored right hand)



Center bracket x2



Edge brackets
x2 Right hand



Support Brackets

Holes =

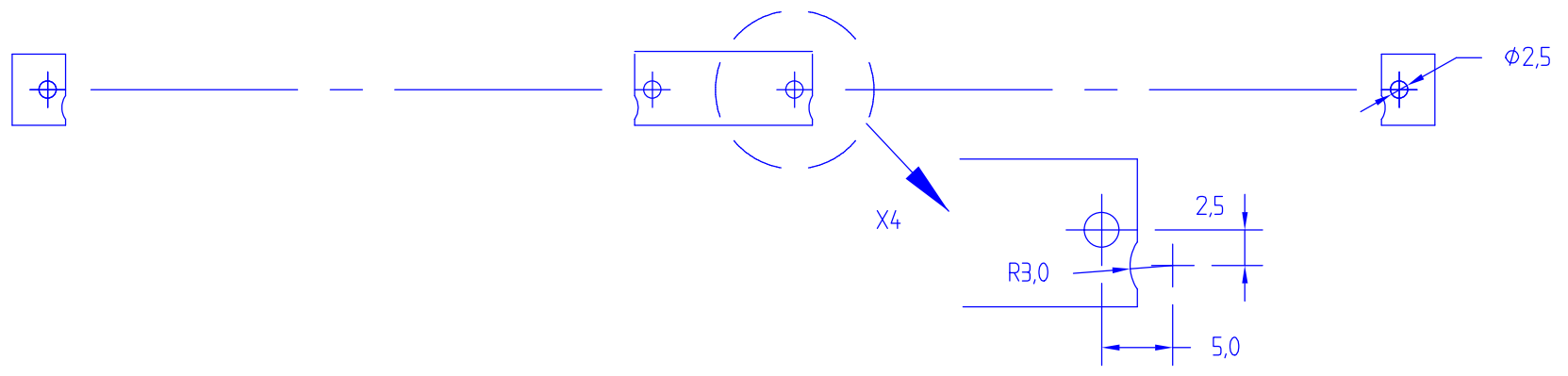
Edge -
x2 = $\phi 2.50$

Center
x4 = $\phi 2.50$

Material =
25mm X 25mm x 1.5mm Aluminium angle

Remove all burrs

Detail A
Edge - 1 each
Center - 2 each



DM Associates
33, Northbrook Road
Aldershot, Hampshire. GU11 3HE UK
Email - mike@soemtron.org
www.soemtron.org

Material	Tolerances	0 Decimal Places	+/- 0.5
1.5mm Alu	Unless	1 Decimal Place	+/- 0.25
Finish	Otherwise	2 Decimal Places	+/- 0.10
Clean	Stated	Angles +/- 2 Deg.	

Dimensions in		to BS308, DO NOT SCALE		Scale	Nts	Title
Drawn	Name	Date	Sheet		2	www.soemtron.org Extender Board Extender Brackets Mechanical
Checked			Next sheet		3	
			Drawing Number			

© 2014 Mike Hatch. (www.soemtron.org)